



2005 Illinois School Profile

A Brief Guide for Parents

This Profile provides information about our school's students, teachers, student test scores, class sizes and district's budget. For more details, please contact school staff or go to the Illinois State Report Card link on the ISBE web site: www.isbe.net.

EMERSON ELEM SCHOOL
MAYWOOD-MELROSE PARK-BROADVIEW-89
MAYWOOD, ILLINOIS
Grades: K 1 2 3 4 5 6 7 8
RCDTS Code: 14-016-0890-02-2002



Key Statistics

Number of Students	472
Attendance Rate	94.8

AVERAGE CLASS SIZE

	School	State
Kindergarten	17.0	20.9
Grade 1	19.0	21.5
Grade 3	20.3	22.3
Grade 6	22.0	23.4
Grade 8	13.5	22.9
High School		



Student Information

RACIAL/ETHNIC BACKGROUND (%)

	School	State
White	0.0	56.7
Black	92.4	20.3
Hispanic	7.4	18.3
Asian/Pacific Islander	0.0	3.7
Native American	0.0	0.2
Multiracial/Ethnic	0.2	0.7

ADDITIONAL INFORMATION (%)

	School	State
Low Income	83.3	40.0
Limited English Proficient	2.5	6.6
Mobility	65.5	16.1





Teacher Information

	District *	State
Average Teaching Experience (Years)	8.8	13.6
% Teachers with Emergency or Provisional Credentials	4.3	1.9
Average Teacher Salaries	\$46,665	\$55,558
% Teachers with Graduate Degrees	26.1	49.1

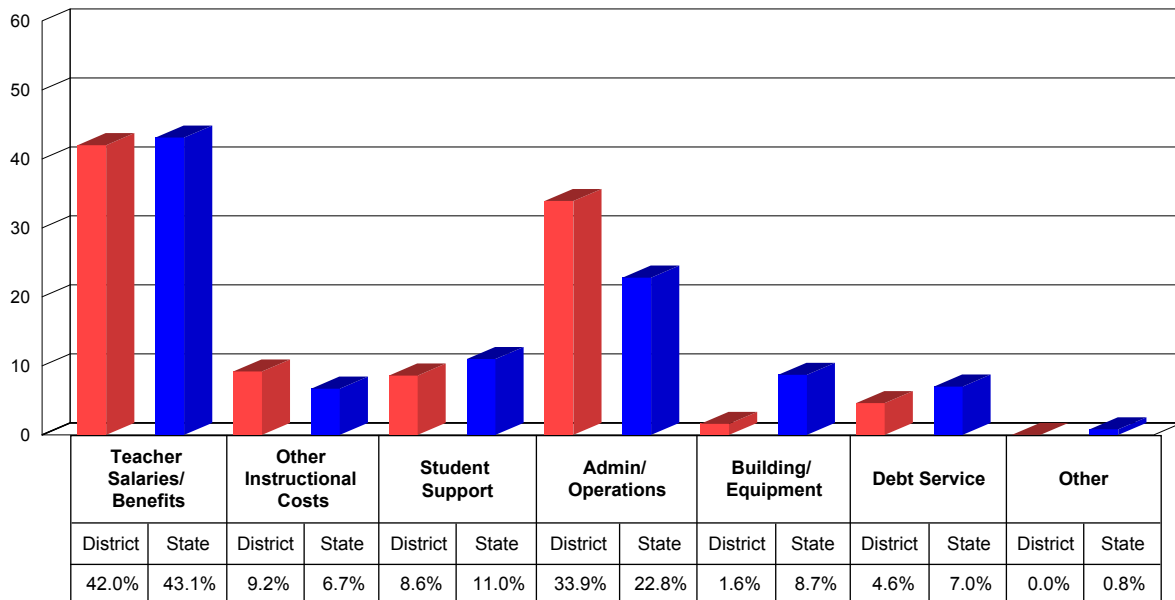
* These represent school level data in the case of charter schools.



School District Finances

This chart shows how we spent our money as a district in the 2003-04 school year. Instructional costs include books and classroom materials. Student support includes counseling, transportation and food service. Administration/operations includes principal salaries and the cost of janitorial services. Building/equipment and debt service include the costs of school facilities.

DISTRICT SPENDING

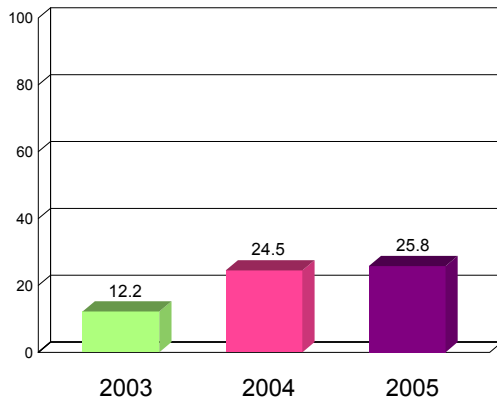




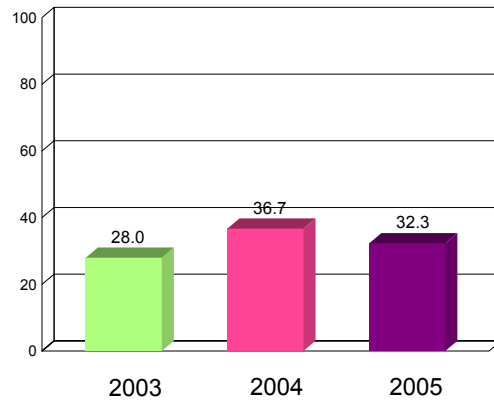
How our students do on state tests is just one way to measure their academic achievement. You can compare the percentage of our students that meet or exceed standards on statewide tests to the statewide percentage. You should also look at how this year's results compare to previous years'. The Illinois Standards Achievement Test (ISAT) is the state test administered to students in selected elementary grades. The Prairie State Achievement Examination (PSAE) is the state test that students take in the 11th grade.

GRADE 3 ISAT - READING AND MATHEMATICS (PERCENT MEETING OR EXCEEDING STANDARDS)

GRADE 3 READING



GRADE 3 MATHEMATICS



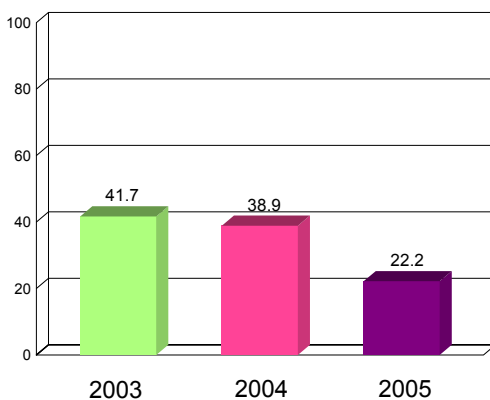
2005 - Grade 3 ISAT Reading and Mathematics (Percent Meeting or Exceeding Standards)

	Reading
School	25.8
State	66.6

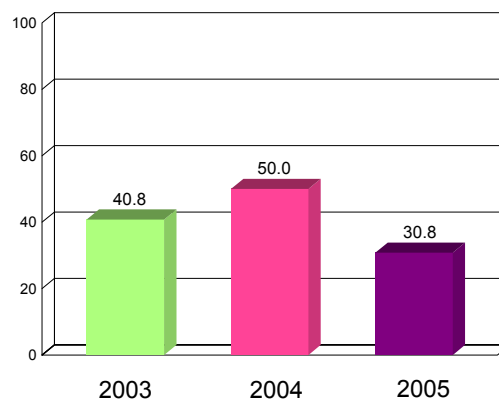
	Mathematics
School	32.3
State	79.2

GRADE 5 ISAT - READING AND MATHEMATICS (PERCENT MEETING OR EXCEEDING STANDARDS)

GRADE 5 READING



GRADE 5 MATHEMATICS



2005 - Grade 5 ISAT Reading and Mathematics (Percent Meeting or Exceeding Standards)

	Reading
School	22.2
State	62.8

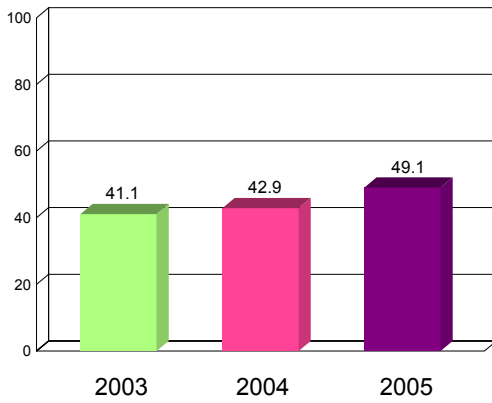
	Mathematics
School	30.8
State	73.1



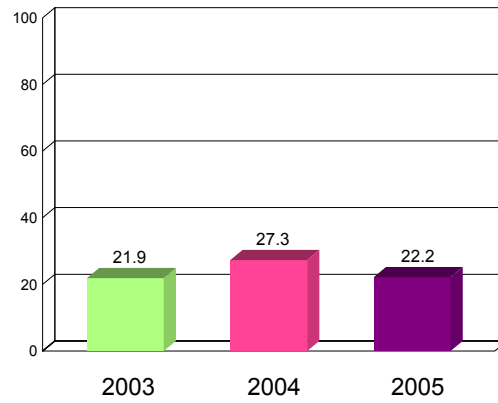


GRADE 8 ISAT - READING AND MATHEMATICS (PERCENT MEETING OR EXCEEDING STANDARDS)

GRADE 8 READING



GRADE 8 MATHEMATICS



2005 - Grade 8 ISAT Reading and Mathematics (Percent Meeting or Exceeding Standards)

	Reading
School	49.1
State	72.7

	Mathematics
School	22.2
State	54.3

GRADE 4 AND GRADE 7 ISAT - SCIENCE (PERCENT MEETING OR EXCEEDING STANDARDS)

2005 - ISAT Science (Percent Meeting or Exceeding Standards)

	Grade 4
School	38.3
State	71.4

	Grade 7
School	37.5
State	74.6





Adequate Yearly Progress

The No Child Left Behind Act and Illinois law require the State to measure whether our school is making Adequate Yearly Progress (AYP). AYP is based on the percent of students that meet/exceed standards on state tests, both as a whole and by different subgroups. Schools must also meet minimum attendance or graduation rates. If a school does not make AYP in the same subject area for two consecutive years, it is identified for School Improvement.

Is this school making Adequate Yearly Progress (AYP)?	No
Is this school making AYP in Reading?	No
Is this school making AYP in Mathematics?	No

Has this school been identified for School Improvement according to the AYP specifications of the federal No Child Left Behind (NCLB) Act?	Yes
2005-06 Federal Improvement Status	Restructuring
2005-06 State Improvement Status	Academic Watch Status

This School Profile was prepared for you in partnership with the Illinois State Board of Education.



**Illinois State
Board of Education**

Rod Blagojevich, Governor



PLANNED IMPROVEMENT FOR THE SCHOOL AND DISTRICT

This is the final section of the school report card in which your school and district provide information below on areas of success and areas for planned improvement based on your school's improvement plan.
(For report cards disseminated electronically, this information may be provided in a separate document due to differences in the software used. If you are unable to locate this document, please contact your local school or district office.)

The 2005 ISAT test results indicated that the Emerson students did not meet or exceed the state in any of the tested area. The test results indicate a need for improvement across all core subject areas.

Emerson students continue to need improvement in Reading, Math and Writing in grades 3, 5 and 8. Reading and Math will continue to be the primary focus in all grade level for the 2005-2006 school year. Additional strategies and support is needed to improve student achievement. The following strategies are being implemented to help our students to meet or exceed the state goals:

- Project All-Stars: after-school tutoring
- Align curriculum with the Illinois Learning Standards
- 90 minutes reading block: Grades K-8th
- AKA Ivy League: after school tutoring 1st – 3rd
- Staff Development
- Implementation of the School Improvement Plan
- Phonics and Phonemic Awareness K – 3rd
- Reading Workshop: Literacy Coaches
- Monitor student writings on a monthly basis
- Monitor math instruction via pacing guides
- Reading Incentives: Book-It, Six Hours Reading Club
- Project Read
- Book Club
- Young Authors
- Literacy Instruction
- Peer Mediation

The administration, faculty and school community is strongly committed to provide an effective educational program that will meet the needs of our students.