



2005 Illinois School Profile

A Brief Guide for Parents

This Profile provides information about our school's students, teachers, student test scores, class sizes and district's budget. For more details, please contact school staff or go to the Illinois State Report Card link on the ISBE web site: www.isbe.net.

LINCOLN ELEM SCHOOL
MAYWOOD-MELROSE PARK-BROADVIEW-89
MAYWOOD, ILLINOIS
Grades: K 1 2 3 4 5 6 7 8
RCDTS Code: 14-016-0890-02-2006



Key Statistics

Number of Students	694
Attendance Rate	95.3

AVERAGE CLASS SIZE

	School	State
Kindergarten	20.5	20.9
Grade 1	23.0	21.5
Grade 3	17.3	22.3
Grade 6	18.0	23.4
Grade 8	21.8	22.9
High School		



Student Information

RACIAL/ETHNIC BACKGROUND (%)

	School	State
White	1.3	56.7
Black	22.8	20.3
Hispanic	75.4	18.3
Asian/Pacific Islander	0.3	3.7
Native American	0.1	0.2
Multiracial/Ethnic	0.1	0.7

ADDITIONAL INFORMATION (%)

	School	State
Low Income	80.5	40.0
Limited English Proficient	21.3	6.6
Mobility	31.5	16.1





Teacher Information

	District *	State
Average Teaching Experience (Years)	8.8	13.6
% Teachers with Emergency or Provisional Credentials	4.3	1.9
Average Teacher Salaries	\$46,665	\$55,558
% Teachers with Graduate Degrees	26.1	49.1

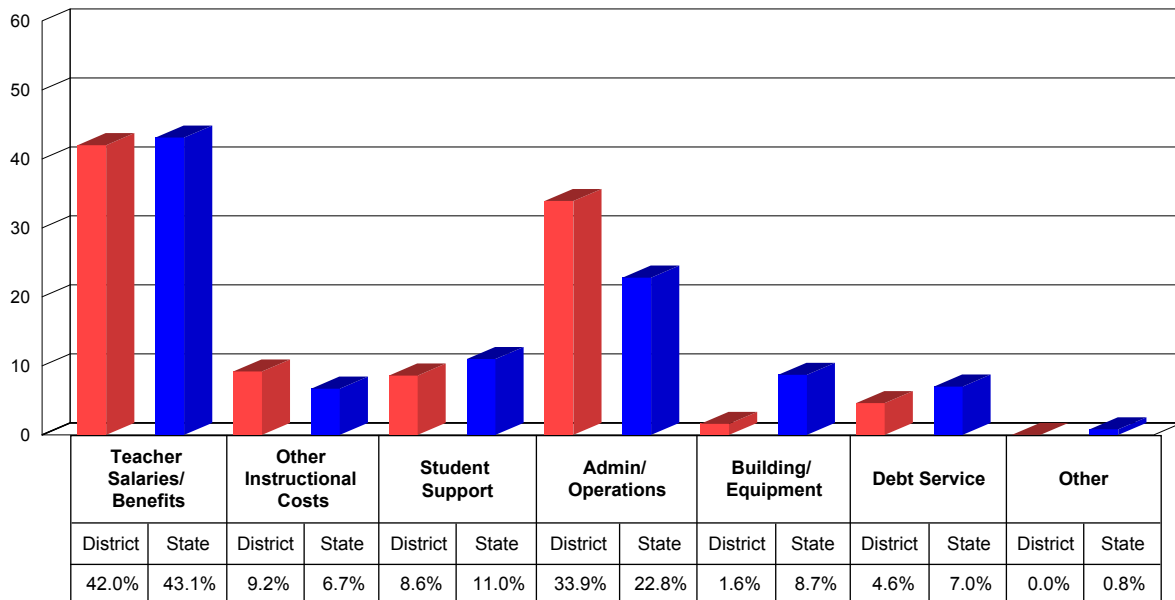
* These represent school level data in the case of charter schools.



School District Finances

This chart shows how we spent our money as a district in the 2003-04 school year. Instructional costs include books and classroom materials. Student support includes counseling, transportation and food service. Administration/operations includes principal salaries and the cost of janitorial services. Building/equipment and debt service include the costs of school facilities.

DISTRICT SPENDING

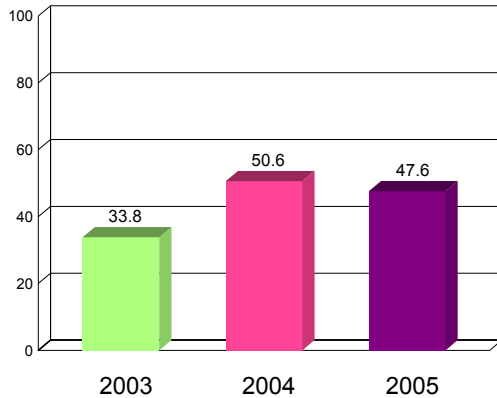




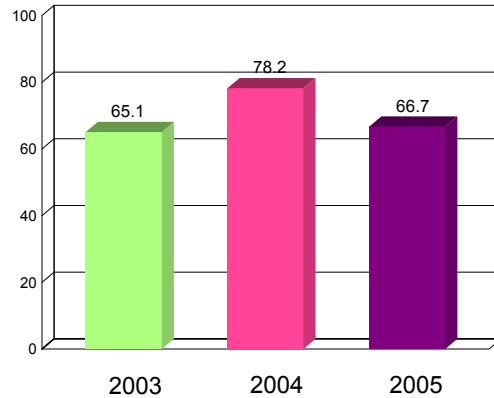
How our students do on state tests is just one way to measure their academic achievement. You can compare the percentage of our students that meet or exceed standards on statewide tests to the statewide percentage. You should also look at how this year's results compare to previous years'. The Illinois Standards Achievement Test (ISAT) is the state test administered to students in selected elementary grades. The Prairie State Achievement Examination (PSAE) is the state test that students take in the 11th grade.

GRADE 3 ISAT - READING AND MATHEMATICS (PERCENT MEETING OR EXCEEDING STANDARDS)

GRADE 3 READING



GRADE 3 MATHEMATICS



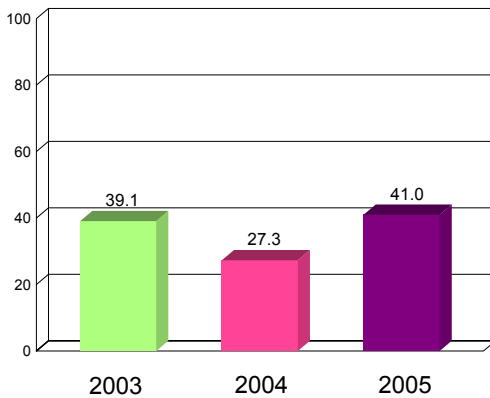
2005 - Grade 3 ISAT Reading and Mathematics (Percent Meeting or Exceeding Standards)

	Reading
School	47.6
State	66.6

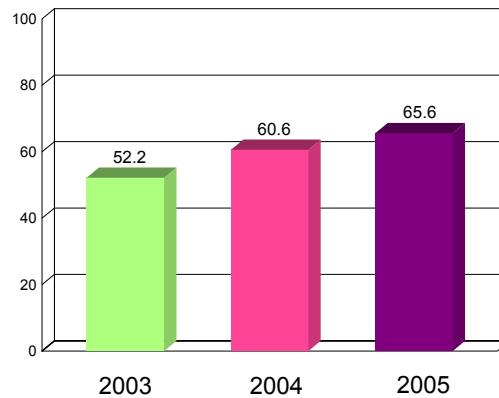
	Mathematics
School	66.7
State	79.2

GRADE 5 ISAT - READING AND MATHEMATICS (PERCENT MEETING OR EXCEEDING STANDARDS)

GRADE 5 READING



GRADE 5 MATHEMATICS



2005 - Grade 5 ISAT Reading and Mathematics (Percent Meeting or Exceeding Standards)

	Reading
School	41.0
State	62.8

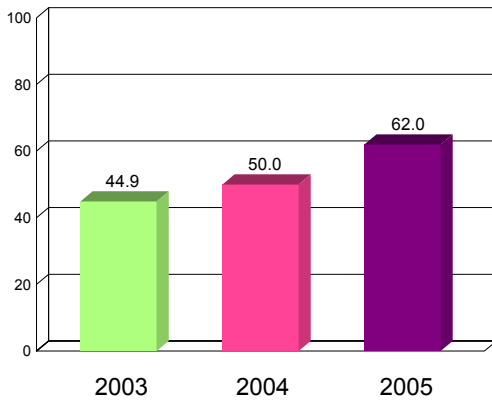
	Mathematics
School	65.6
State	73.1



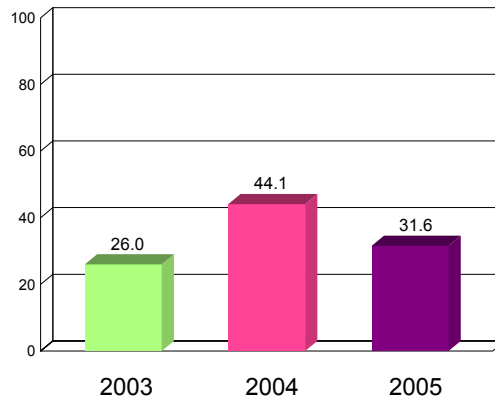


GRADE 8 ISAT - READING AND MATHEMATICS (PERCENT MEETING OR EXCEEDING STANDARDS)

GRADE 8 READING



GRADE 8 MATHEMATICS



2005 - Grade 8 ISAT Reading and Mathematics (Percent Meeting or Exceeding Standards)

	Reading
School	62.0
State	72.7

	Mathematics
School	31.6
State	54.3

GRADE 4 AND GRADE 7 ISAT - SCIENCE (PERCENT MEETING OR EXCEEDING STANDARDS)

2005 - ISAT Science (Percent Meeting or Exceeding Standards)

	Grade 4
School	48.3
State	71.4

	Grade 7
School	41.4
State	74.6





Adequate Yearly Progress

The No Child Left Behind Act and Illinois law require the State to measure whether our school is making Adequate Yearly Progress (AYP). AYP is based on the percent of students that meet/exceed standards on state tests, both as a whole and by different subgroups. Schools must also meet minimum attendance or graduation rates. If a school does not make AYP in the same subject area for two consecutive years, it is identified for School Improvement.

Is this school making Adequate Yearly Progress (AYP)?	Yes
Is this school making AYP in Reading?	Yes
Is this school making AYP in Mathematics?	Yes

Has this school been identified for School Improvement according to the AYP specifications of the federal No Child Left Behind (NCLB) Act?	No
2005-06 Federal Improvement Status	
2005-06 State Improvement Status	

This School Profile was prepared for you in partnership with the Illinois State Board of Education.



**Illinois State
Board of Education**

Rod Blagojevich, Governor



- Continuing with “first Tuesdays of the month” when students have a half-day off of school and the staff spends the afternoon involved in staff development

The Lincoln School family is intent on building a professional learning community where we work together in order that each individual is able to reach his or her highest goal. Our academic focus will continue to be in the core subjects of reading, mathematics, and science.