



2005 Illinois School Profile

A Brief Guide for Parents

This Profile provides information about our school's students, teachers, student test scores, class sizes and district's budget. For more details, please contact school staff or go to the Illinois State Report Card link on the ISBE web site: www.isbe.net.

ROOSEVELT ELEM SCHOOL
MAYWOOD-MELROSE PARK-BROADVIEW-89
BROADVIEW, ILLINOIS
Grades: PK K 1 2 3 4 5 6 7 8
RCDTS Code: 14-016-0890-02-2008



Key Statistics

Number of Students	491
Attendance Rate	95.6

AVERAGE CLASS SIZE

	School	State
Kindergarten	34.5	20.9
Grade 1	26.5	21.5
Grade 3	22.5	22.3
Grade 6	22.3	23.4
Grade 8	18.0	22.9
High School		



Student Information

RACIAL/ETHNIC BACKGROUND (%)

	School	State
White	0.2	56.7
Black	94.9	20.3
Hispanic	4.9	18.3
Asian/Pacific Islander	0.0	3.7
Native American	0.0	0.2
Multiracial/Ethnic	0.0	0.7

ADDITIONAL INFORMATION (%)

	School	State
Low Income	62.9	40.0
Limited English Proficient	2.2	6.6
Mobility	42.7	16.1





Teacher Information

	District *	State
Average Teaching Experience (Years)	8.8	13.6
% Teachers with Emergency or Provisional Credentials	4.3	1.9
Average Teacher Salaries	\$46,665	\$55,558
% Teachers with Graduate Degrees	26.1	49.1

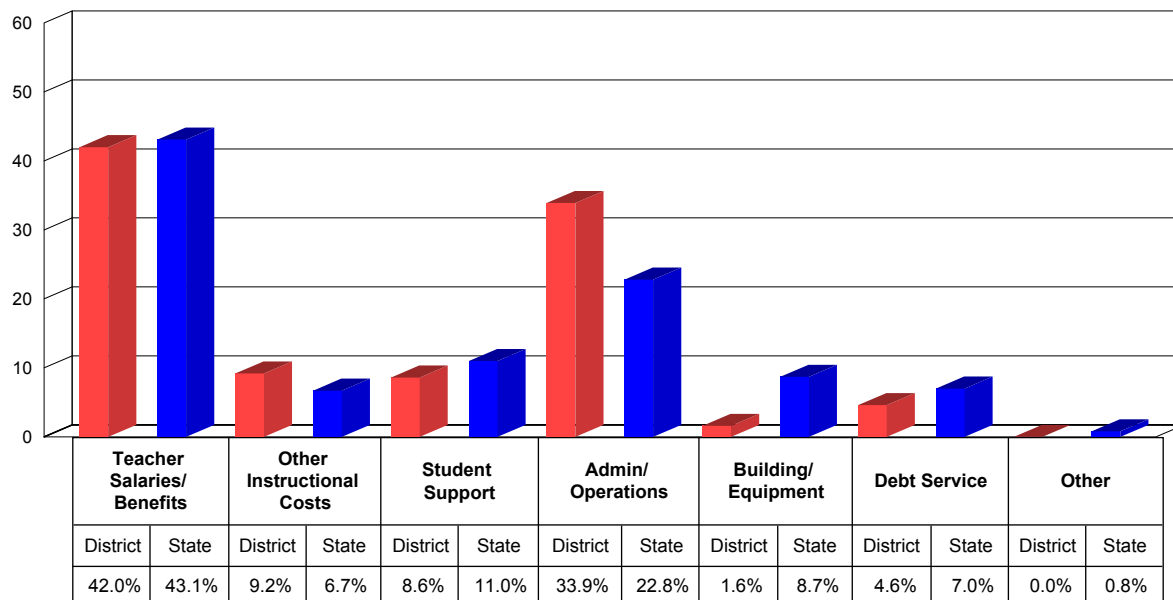
* These represent school level data in the case of charter schools.



School District Finances

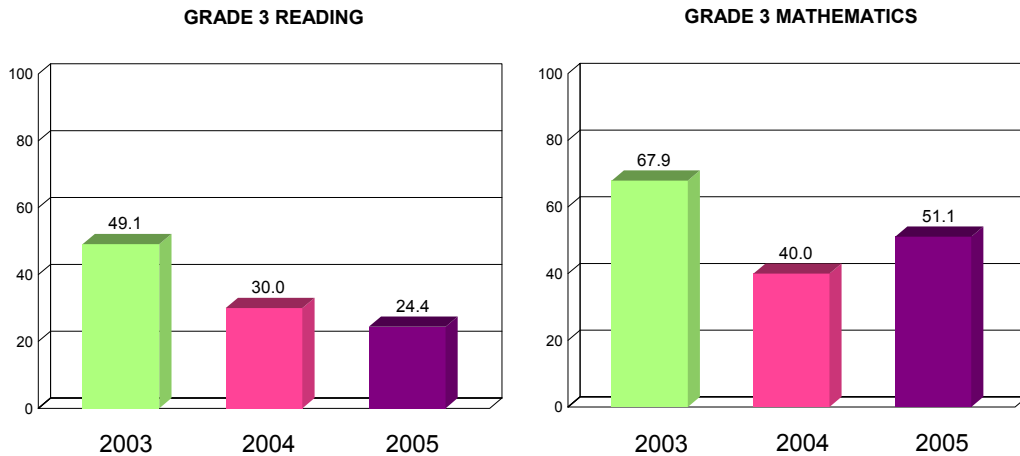
This chart shows how we spent our money as a district in the 2003-04 school year. Instructional costs include books and classroom materials. Student support includes counseling, transportation and food service. Administration/operations includes principal salaries and the cost of janitorial services. Building/equipment and debt service include the costs of school facilities.

DISTRICT SPENDING



How our students do on state tests is just one way to measure their academic achievement. You can compare the percentage of our students that meet or exceed standards on statewide tests to the statewide percentage. You should also look at how this year's results compare to previous years'. The Illinois Standards Achievement Test (ISAT) is the state test administered to students in selected elementary grades. The Prairie State Achievement Examination (PSAE) is the state test that students take in the 11th grade.

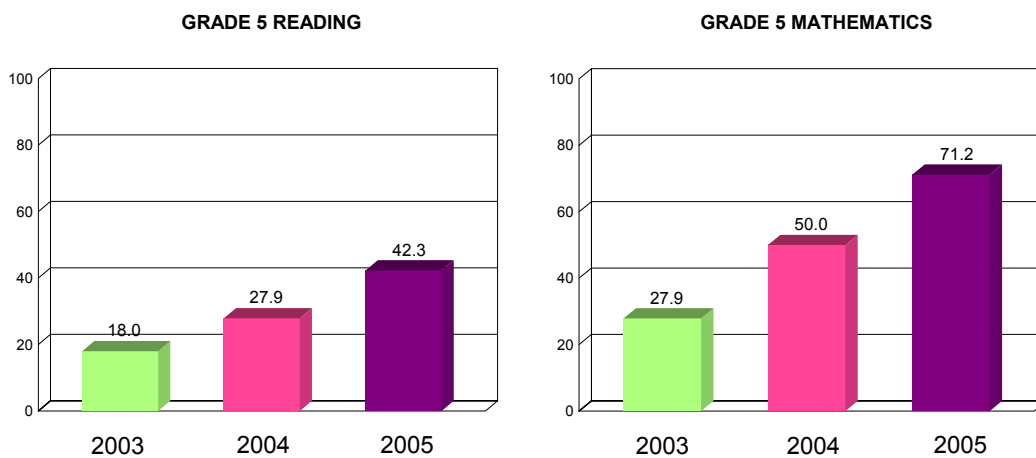
GRADE 3 ISAT - READING AND MATHEMATICS (PERCENT MEETING OR EXCEEDING STANDARDS)



2005 - Grade 3 ISAT Reading and Mathematics (Percent Meeting or Exceeding Standards)

	Reading	Mathematics
School	24.4	51.1
State	66.6	79.2

GRADE 5 ISAT - READING AND MATHEMATICS (PERCENT MEETING OR EXCEEDING STANDARDS)



2005 - Grade 5 ISAT Reading and Mathematics (Percent Meeting or Exceeding Standards)

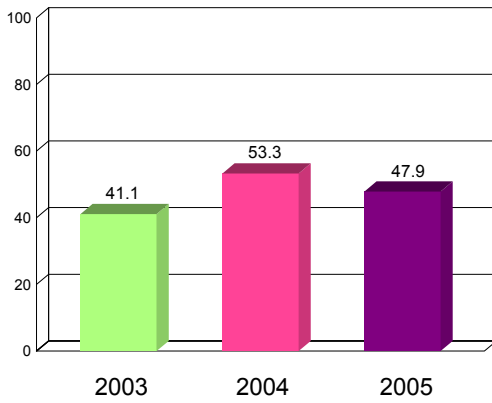
	Reading	Mathematics
School	42.3	71.2
State	62.8	73.1



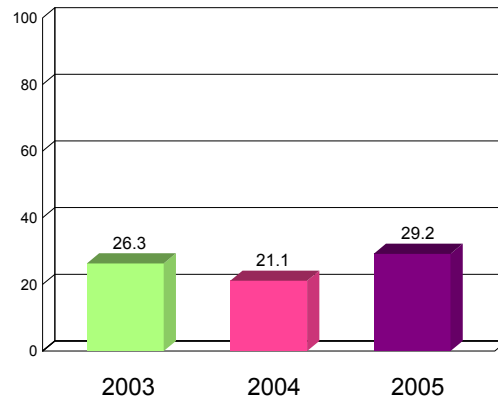


GRADE 8 ISAT - READING AND MATHEMATICS (PERCENT MEETING OR EXCEEDING STANDARDS)

GRADE 8 READING



GRADE 8 MATHEMATICS



2005 - Grade 8 ISAT Reading and Mathematics (Percent Meeting or Exceeding Standards)

	Reading
School	47.9
State	72.7

	Mathematics
School	29.2
State	54.3

GRADE 4 AND GRADE 7 ISAT - SCIENCE (PERCENT MEETING OR EXCEEDING STANDARDS)

2005 - ISAT Science (Percent Meeting or Exceeding Standards)

	Grade 4
School	22.7
State	71.4

	Grade 7
School	38.2
State	74.6





Adequate Yearly Progress

The No Child Left Behind Act and Illinois law require the State to measure whether our school is making Adequate Yearly Progress (AYP). AYP is based on the percent of students that meet/exceed standards on state tests, both as a whole and by different subgroups. Schools must also meet minimum attendance or graduation rates. If a school does not make AYP in the same subject area for two consecutive years, it is identified for School Improvement.

Is this school making Adequate Yearly Progress (AYP)?	No
Is this school making AYP in Reading?	No
Is this school making AYP in Mathematics?	Yes

Has this school been identified for School Improvement according to the AYP specifications of the federal No Child Left Behind (NCLB) Act?	Yes
2005-06 Federal Improvement Status	Restructuring
2005-06 State Improvement Status	Academic Watch Status

This School Profile was prepared for you in partnership with the Illinois State Board of Education.



**Illinois State
Board of Education**

Rod Blagojevich, Governor



- Student Incentives and Recognition Program
- Rebecca Caudill Young Readers' Award Program
- Career Day
- PBIS – Positive Behavior Intervention Strategies
- Gifted Program
- G.R.E.A.T. Program
- D.A.R.E. Program

The administration, faculty and school community are all invested in building a community of learners. We believe that all students can learn and as a school community we are all "*Striving For Excellence.*"

Cynthia L. Hines-Butler, Principal
Roosevelt Elementary School